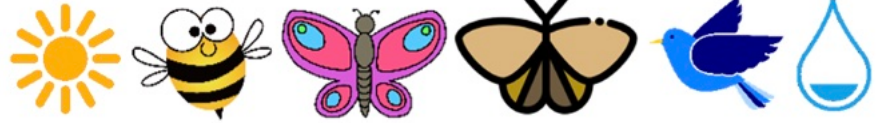


Aristida purpurea

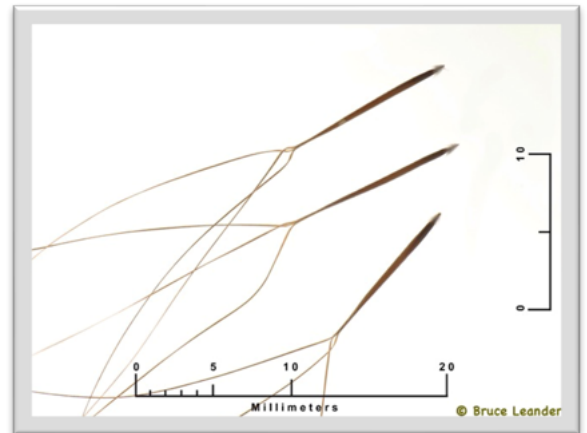
Purple Three-Awn



Plant type:	Perennial, warm-season bunchgrass
Season of Interest:	May - September
Height: 1-2'	Spread: 2'
Water needs:	Low
Native Region:	CO, AZ, KS, NE, NM, OK, TX, UT, WY
Elevation:	3,500-9,000'



Maintenance:	Low
Good to Know:	Seed heads should be removed before maturity to prevent spread
Garden uses:	Beds/Borders
Habitat:	Dry slopes, grasslands, rocky crevices, open woodlands
Interesting fact:	Larval host to skipper and satyrs; bobwhite quail use as nesting substrate



Ease of Propagation: Medium

Propagation: Best time to sow seeds in situ is during July as this seed likes it warm to germinate. Sow at 1/8" depth. It takes about 4 months to grow. [Decker] Seeds grow fast; after one month the roots can reach 19". If starting indoors, transplant in a timely way to avoid binding of roots.

